

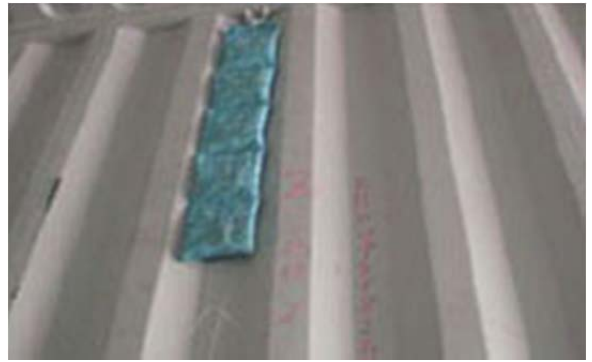
Example of Unacceptable Debris and Remnants

① Materials affixed or used by customer
DG placard



Materials





Nails



② Inside Panels

Mark by Cargo



Adhesive Residues



③ Floor

Dirt/Dust which Adheres to Hands



Liquid





Mud



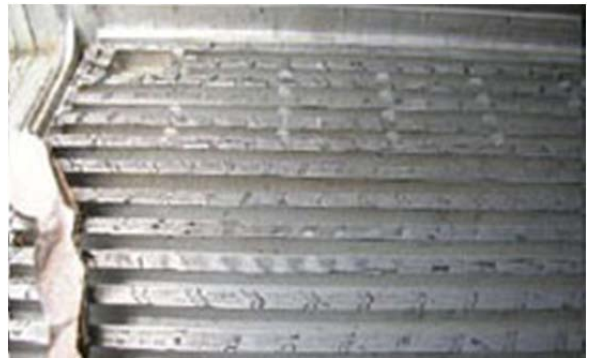
Sawdust



Incomplete Drying



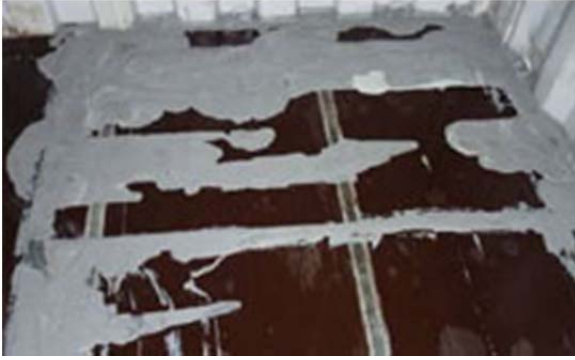
Tire Marks



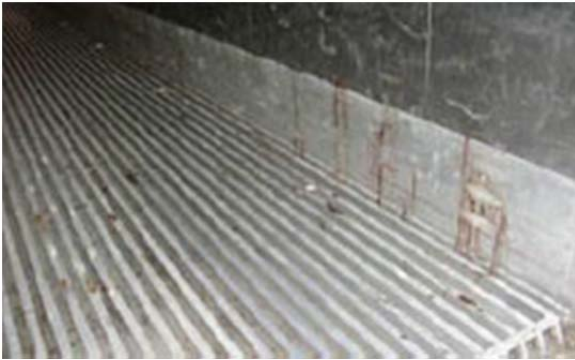
Organic Substance



Paint and Varnish



④Reefer Containers
Blood



Residue



⑤Residual Smell

Residual smell cause cargo damage for next shipment.